



The Cane Receivals System is a fully integrated package that accommodates all phases of the supply and processing of cane from the grower to the mill



Cane Receivals Management Information System

One of our major strengths has been the constructive feedback from our users

The CaneRec package is a complete Management Information System for the recording and tracking of the sugar cane product from the field through to the factory. It is a comprehensive suite of application modules designed to satisfy all requirements of the industry.

Our application packages are continually expanded to keep abreast with changing technology

| FULL YARD | | | | | | | | | |
|-----------|------------|--|------------|----------|------------|----------|------------|--|--|
| Line 1 | | Line 2 | | Line 3 | | Line 4 | | | |
| Bins | Sus | Bins | Sus | Bins | Sus | Bins | Sus | | |
| 30 (112) | 0 | 10 (97) | 1 | 32 (105) | 2 | 30 (102) | 1 | | |
| Bin No | Ticket No. | Bin No | Ticket No. | Bin No | Ticket No. | Bin No | Ticket No. | | |
| 1192 | 80098 | 24 | 520098 | 993 | 170835 | 1315 | 470722 | | |
| 737 | 80098 | 784 | 520098 | 1489 | 170835 | | 470722 | | |
| 24 | € | Ticket 170271 | | | | | 470722 | | |
| 926 | € | 8 field bins: 422, 154, 1007, 1442, 714, 705, 839, 1456 | | | | | 470722 | | |
| 168 | € | 12 yard bins: 539, 773, 1679, 366, 846, 1598, 569, 1510, 1039, 1806, 1880, 869 | | | | | 470722 | | |
| 285 | € | | | | | | 80094 | | |
| 1086 | € | | | | | | 80094 | | |
| 163 | € | | | | | | 80094 | | |
| 73 | € | | | | | | 80094 | | |
| 416 | € | | | | | | 80094 | | |
| 879 | € | | | | | | 80094 | | |
| 572 | € | | | | | | 80094 | | |
| 631 | € | | | | | | 80094 | | |
| 877 | € | | | | | | 80094 | | |
| 840 | € | | | | | | 80094 | | |
| 324 | € | | | | | | 80094 | | |
| 708 | € | | | | | | 80094 | | |
| 152 | € | | | | | | 80094 | | |
| 46 | € | | | | | | 80094 | | |
| 910 | € | | | | | | 80094 | | |
| 868 | € | | | | | | 80094 | | |
| 364 | € | | | | | | 80094 | | |
| 784 | € | | | | | | 80094 | | |
| 1063 | € | | | | | | 80094 | | |
| 424 | 80098 | | | 841 | C | 910 | 80094 | | |
| 56 | 530442 | | | 936 | 390277 | 198 | 80094 | | |
| 1055 | 530442 | | | 739 | 390277 | 378 | 80094 | | |
| 209 | 530442 | | | 1834 | 390277 | 454 | 80094 | | |
| 987 | 530442 | | | 53 | 390277 | 1153 | 80094 | | |
| 1428 | 530442 | | | 526 | 390277 | 224 | 80094 | | |

Features:

- Capture of Consignment Details
- Weighbridge & Tip Control
- Sample Tracking
- Laboratory Analysis System
- Factory Production Information
- System Administration

Field Productivity Systems

- Recording of all farm field statistics
- Grower feedback using web, email, fax and mail

Payment Details

Annunciator Module

Grower Information Retrieval

Mirrabooka Systems Pty Ltd
 Unit 6, 3 Jockers Street, STRATHPINE QLD 4500, Brisbane, Australia
 Phone: 61 7 3857 7899 Email: sales@mirrabooka.com Web: www.mirrabooka.com

CaneRec – Description

Consignment details can be retrieved using a range of methods

Complete overview of the receivals cycle

Control strategies have been developed for a number of configurations

Tracks cane from the weighbridge to the laboratory

Total solution for the factory laboratory operations

Capture of Consignment Details

As the cane is harvested and transported to the mill, the consignment details are recorded using one of the following methods:-

- Written Consignment Form



Full Yard Handling

This display illustrates the complete receivals cycle for a mill using rail transport.

Field Queue—displays the bins sent in from field telemetry devices.

Full Yard—Bins are identified by RFID readers and matched to Telemetry if available. Manually consigned from paper tickets.



Weighbridge & Tip Control

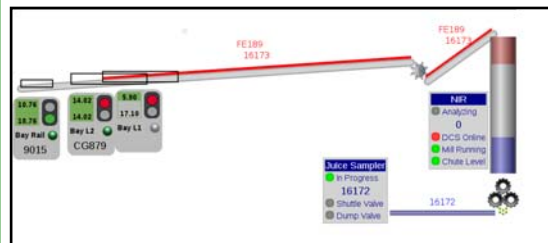


In some installations the weighbridge & tip are combined while in other sites these can be several hundred metres apart. The automatic control of these two devices is unique to each installation. Control strategies have been developed for a number of configurations which utilise PLCs for the field I/O control.

Sample Tracking

This package has been designed as a total solution for a continuous cane tracking application. It tracks the cane from the weighbridge to the laboratory analysis

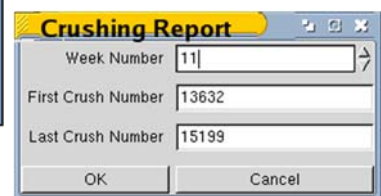
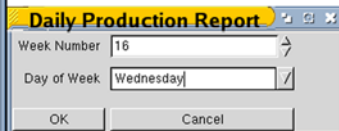
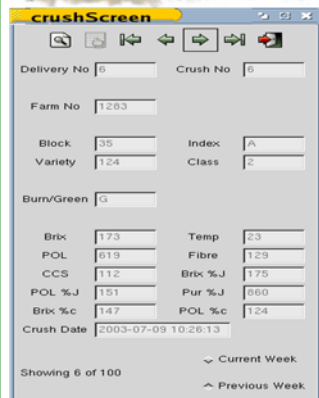
equipment, allowing each grower's delivery to be identified at each stage through the process.



Laboratory Analysis System

This is a comprehensive range of application modules designed to satisfy all requirements of the sugar industry laboratory.

The new integrated laboratory system package was designed to integrate the traditional laboratory analytical methods and the more recent NIR Cane Analysis results. This system records both method analysis results and provides the user with the ability to switch between methods and provide comparisons between both analysis sets.



CaneRec – Description

Real time display and reports

Improved efficiency using productivity data

Immediate notification of problems

Timely feedback to growers using multi-media

Simple operations for system administrator

Factory Production Information

The factory production information is collected on an hourly basis, with real time display screens and reports providing details for hour, shift, daily, weekly and season to date values.



Field Productivity System

In the sugar industry today, a great deal of emphasis is placed on farm productivity, and this module provides an extensive level of feedback to the grower. This package has been designed to assist the mill in determining crop estimates, re-adjusting estimates and the

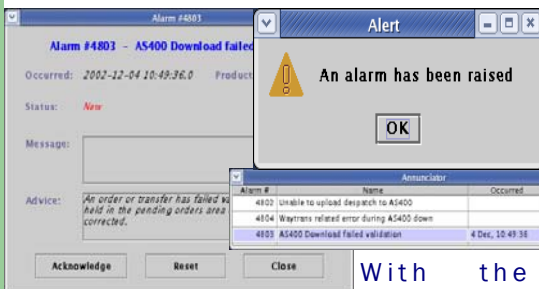
allocation of harvest quotas for farms. It provides harvest details to the harvesting contractor including details of their daily allocation and production information. This assists the growers in future crop planning.

Payment System Transfer

At the completion of the delivery period (usually one week), the end of period procedures are carried out. One of the many functions of these procedures, is the calculation of payment units for each grower.

These calculated payment units can be actual units or relative units determined by either the weekly or daily relative scheme, which ever is adopted by the mill.

Annunciator Module



personnel should a problem occur in any stage of this chain. The Annunciator System was developed to satisfy this requirement.

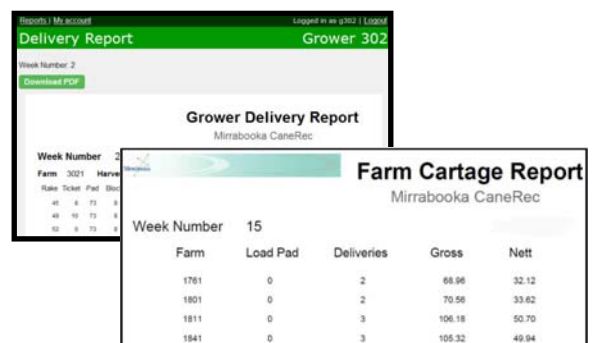
An alarm can be configured to set a combination of the functions below:-

- A pop up window alerts the operator of a fault condition.
- Email to the site administrator.
- Email the support organisation (Mirrabooka Systems)

With the continued automation of several sections of the factory, it has been increasingly important to alert key

Grower Information Retrieval

In the current climate, where the drive for greater efficiency and more productivity assumes a high priority, timely feedback to growers is crucial. This package was developed to provide a number of different communication methods to supply growers and other interested parties with information at regular intervals or even on demand.



System Administration

The administration of the system is available through the system administration account which is restricted to key personnel. This account provides a full range of options which allows the System Administrator to fully maintain the system.

